



# HEAVY EQUIPMENT MANAGEMENT FOR CONSTRUCTION AND INFRASTRUCTURE INDUSTRIES

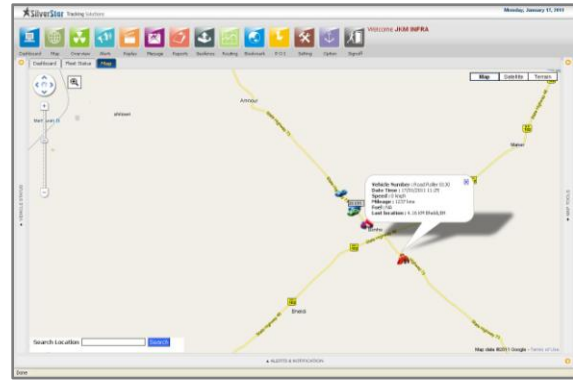


## Never Lose Touch With Our GPS Tracking & Telemetry Solutions

- ✓ **TRACK** asset location
- ✓ **LOG** mileage or engine hours
- ✓ **RECEIVE** real time alerts and maintenance reminders



## Reduce downtime, decrease cost, and improve profitability!



**The ability to monitor heavy equipment minimizes equipment failure and reduces downtime and maintenance costs.**

Many construction and infrastructure projects such as road and bridge building are located in remote regions where only satellite communication equipped GPS tracking systems are useful. It is the same scenario for mining operations. By combining GPS fleet tracking and two-way satellite communications, SilverStar vastly improves the productivity of heavy construction equipment operations.

Through GPS monitoring of construction equipment, you know where and how your equipment is being used. You know immediately if equipment moves outside of a pre-defined area through a digital "geo-fence". Location information also helps you deploy equipment and workforce resources more efficiently.



### Competitive Advantage

Higher customer satisfaction and improved safety are important factors when bidding for new projects.

# Key Benefits of Heavy Equipment Monitoring

- ✓ Monitor engine hours for improved maintenance
- ✓ View location for efficient maintenance & inventory
- ✓ Improve recovery of stolen equipment
- ✓ Monitor warning lights
- ✓ Set and clear geo-fences to alert after hours movement
- ✓ Improve utilization of the equipment
- ✓ Get detailed job costing information
- ✓ Reduce fuel usage
- ✓ Reduced insurance costs
- ✓ Reduced risk of theft and expedited equipment recovery



The SilverStar heavy equipment monitoring is an ideal solution road construction machines, front-end loaders, cranes, bulldozers, or dump trucks.

## Heavy Equipment Monitoring Solution – Main Features

- ✓ Rapidly locate lost or stolen equipment
- ✓ Receive engine hour data and threshold alerts
- ✓ Works in any part of the world
- ✓ Enclosed in weatherproof enclosure and vibration tested
- ✓ Receive email alert for exceptions
- ✓ Receive optional SMS alert for exceptions
- ✓ Geo-fence violation alert via email
- ✓ Web based for easy and convenient access
- ✓ Maximum speed violation notification
- ✓ Optional link to fuel level monitoring
- ✓ Potential insurance benefits
- ✓ Low monthly fee
- ✓ Quick return on your GPS investment
- ✓ Our data network provides extensive coverage

### Web Interface

- ✓ Easy to use web interface
- ✓ 24 / 7 access to data
- ✓ Maps and reports
- ✓ 90 days data storage
- ✓ Unlimited access



## Reporting that lets you control your equipment

- ✓ Daily email summary report
- ✓ View current location on map
- ✓ Activity Report
- ✓ Drive Time
- ✓ Engine on-off Report
- ✓ Fuel Chart
- ✓ Fuel Consumption
- ✓ Fuel Summary
- ✓ Geo-fence Violations
- ✓ Idle Time Report
- ✓ Mileage Report
- ✓ Point of Interest Covered
- ✓ Speed Violation
- ✓ Engine Stoppage
- ✓ Vehicle Summary
- ✓ Work Hours



### Operational Savings

Fuel consumption is one of the largest expenses in the operation of heavy equipment. Lower fuel costs can be achieved by a combination of speed control, idle time reduction and elimination of unauthorized use, whether after hours or during work hours. Even though vehicles are not typically traveling very fast, speeding is still an issue when out of work areas.

### Staff Management

Cost savings through more efficient use of human resources is also meaningful in the Construction and Mining industries. Unauthorized or unexpected overtime billing and misuse of working time can be detected and eliminated by comparing location and work status. Falsified overtime is identified, prevented and job costs get reduced.



Fuel Conservation Benefits		
<b>Speeding Alerts</b>	Speed Reduction	<b>Lower Fleet Fuel Costs</b>
<b>Idle Time Thresholds and Alerts</b>	Idle Time Reduction	<b>Lower Fleet Fuel and Maintenance Costs</b>
<b>Speeding Alerts within a Boundary</b>	Speed Reduction in Specified Zones of Variable Layout	<b>Compliance with local regulations</b>
<b>Unauthorized Use Detection</b>	Improved Productivity, Lower Vehicle Use	<b>Reduced Liability, Insurance Costs and Fuel Use</b>
Staff Management Benefit		
<b>Electronic Accurate Time-carding</b>	More Precise Time Management	<b>More Precise Data, More Efficient Gathering, Eliminates doubt</b>
<b>Location and Employee Work Status Matching</b>	Eliminate Overtime Misappropriation	<b>Lower Cost of Operations</b>
<b>Theft Deterrent and Detection</b>	Reduced Loss Due to Theft	<b>Lower Capital Expense</b>